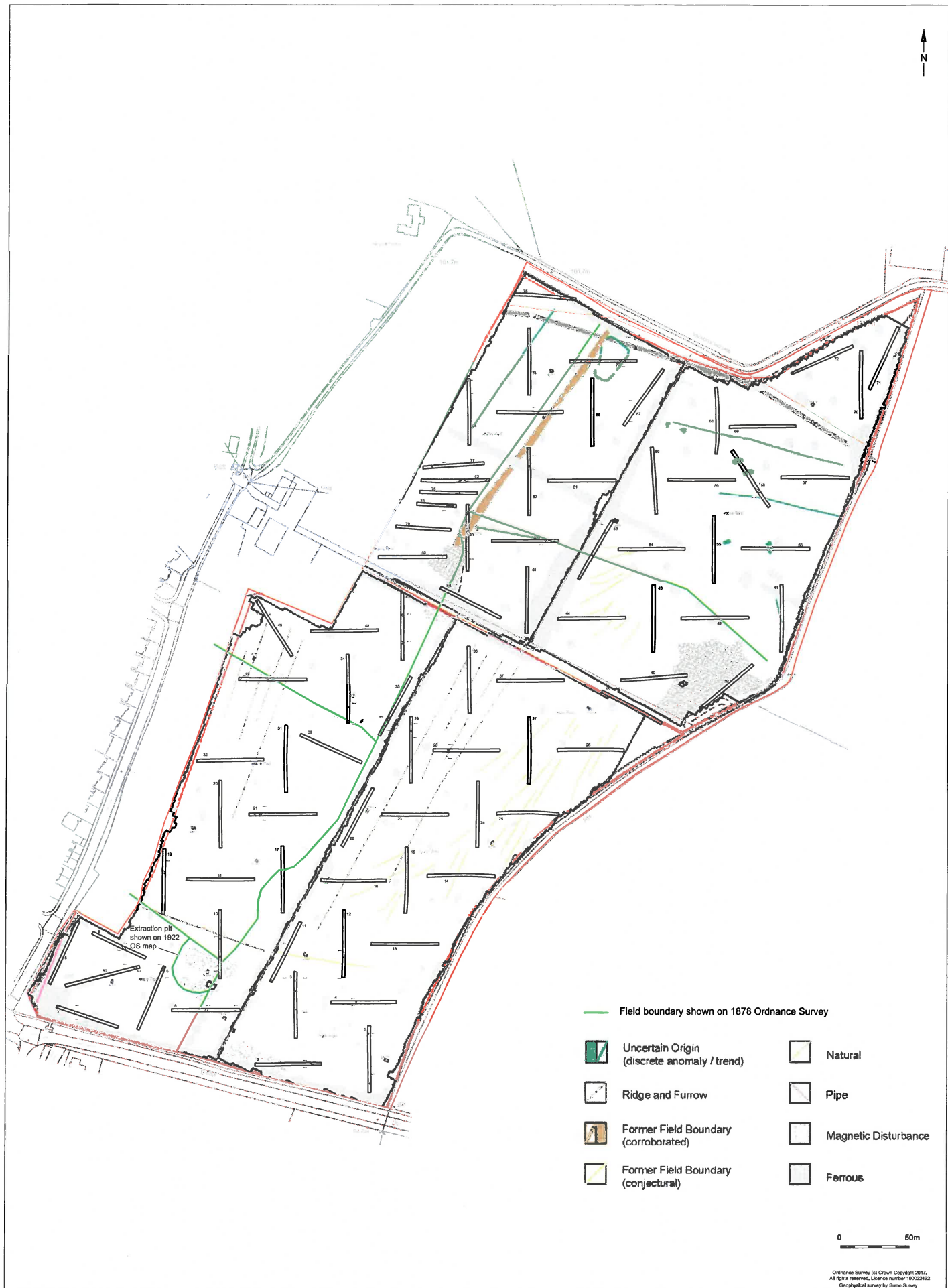


Appendix 8

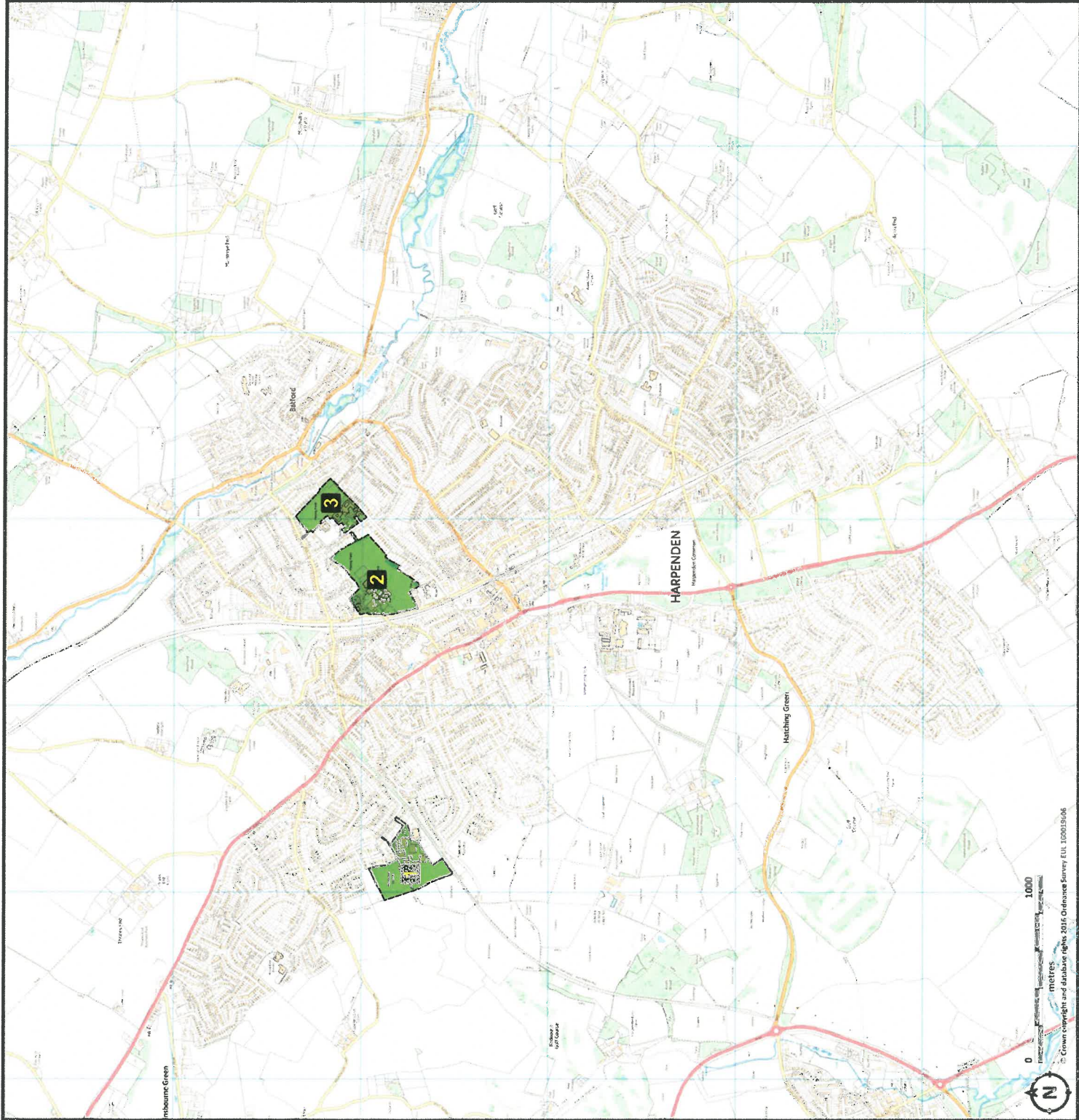
Trench location and geophysical
survey and former field boundaries



Appendix 9

Existing school sites

- EXISTING SECONDARY SCHOOLS**
1. ROUNDWOOD PARK SCHOOL, HARPENDEN
 2. ST GEORGE'S SCHOOL, HARPENDEN
 3. SIR JOHN LAWES SCHOOL, HARPENDEN



**KATHERINE WARINGTON SCHOOL
ALTERNATIVE SITE SEARCH**

Harpenden:
Existing secondary schools

PROJECT NO	DRAWING NO	REV
5204	002	
DRAWN	DATE	SCALE
HNA	JUNE 2017	1:20000 @A3

T: +44 (0) 1438 316 331
planners@vincent-gorbing.co.uk
vincent-gorbing.co.uk
Vincent and Gorbing Limited, Sterling Court
Norton Road, Stevenage, Hertfordshire SG1 2JY
© Copyright Vincent and Gorbing Limited 2016

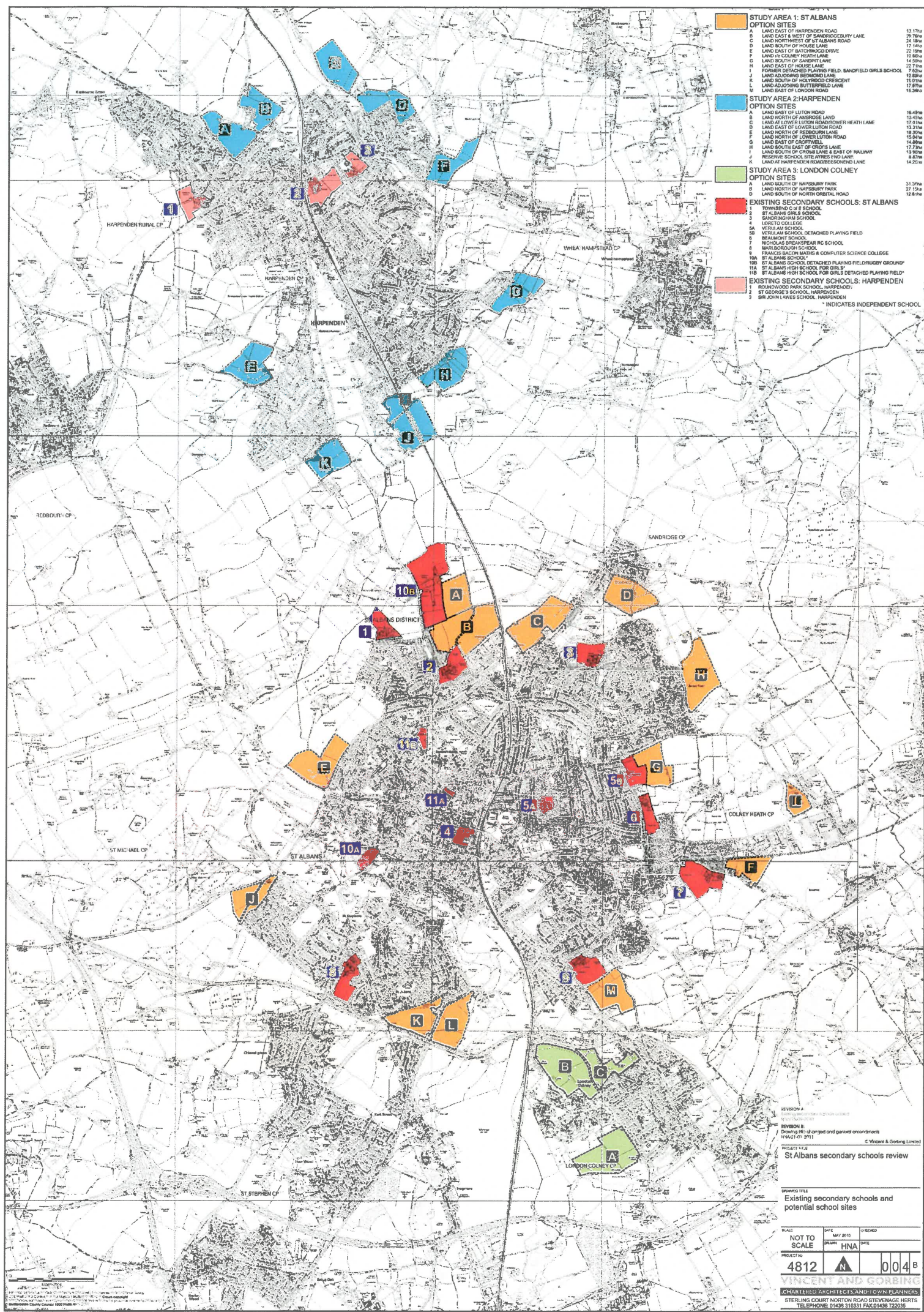


Appendix 10

Harpenden potential sites

Appendix 11

Existing secondary schools and
potential school sites



- STUDY AREA 1: ST ALBANS**
OPTION SITES
A LAND EAST OF HARPENDEN ROAD
B LAND EAST & WEST OF SANDROSBURY LANE
C LAND NORTHWEST OF ST ALBANS ROAD
D LAND SOUTH OF HOUSE LANE
E LAND EAST OF SANDROSBURY LANE
F LAND IN COLNEY HEATH LANE
G LAND SOUTH OF SANDROSBURY LANE
H LAND EAST OF HOUSE LANE
I FORMER DETACHED PLAYING FIELD, SANDFIELD GIRLS SCHOOL
J LAND ADJOINING BERNWOOD LANE
K LAND SOUTH OF HOLWOOD CRESCENT
L LAND ADJOINING BUTTERFIELD LANE
M LAND EAST OF LUTON ROAD
- STUDY AREA 2: HARPENDEN**
OPTION SITES
A LAND EAST OF LUTON ROAD
B LAND NORTH OF SANDROSBURY LANE
C LAND AT LOWER LUTON ROAD/POWER HEATH LANE
D LAND EAST OF LOWER LUTON ROAD
E LAND NORTH OF REDBOURN LANE
F LAND SOUTH OF LOWER LUTON ROAD
G LAND EAST OF CROFTWELL
H LAND SOUTH EAST OF CROFT'S LANE
I LAND SOUTH OF CROFT'S LANE & EAST OF RAILWAY
J RESERVE SCHOOL SITE, JAMES FEND LANE
K LAND AT HARPENDEN ROAD/BERNWOOD LANE
L LAND AT HARPENDEN ROAD/BERNWOOD LANE
- STUDY AREA 3: LONDON COLNEY**
OPTION SITES
A LAND SOUTH OF SANDROSBURY PARK
B LAND NORTH OF SANDROSBURY PARK
C LAND SOUTH OF NORTH ORBITAL ROAD
- EXISTING SECONDARY SCHOOLS: ST ALBANS**
1 TOWNSEND C SCHOOL
2 ST ALBANS GIRLS SCHOOL
3 SANDROSBURY SCHOOL
4 LORETO COLLEGE
5A VERULAM SCHOOL, DETACHED PLAYING FIELD
6 VERULAM SCHOOL
7 NICHOLAS BREAKSPUR RC SCHOOL
8 FRANCIS BACON MATHEMATICS & COMPUTER SCIENCE COLLEGE
9 ST ALBANS SCHOOL, DETACHED PLAYING FIELD/RUGBY GROUND
10 ST ALBANS HIGH SCHOOL FOR GIRLS
11 ST ALBANS HIGH SCHOOL FOR GIRLS, DETACHED PLAYING FIELD
12 ST ALBANS HIGH SCHOOL FOR GIRLS, DETACHED PLAYING FIELD
- EXISTING SECONDARY SCHOOLS: HARPENDEN**
1 ROXBOROUGH PARK SCHOOL, HARPENDEN
2 ST GEORGE'S SCHOOL, HARPENDEN
3 BR. JOHN LARSEN SCHOOL, HARPENDEN
- INDICATES INDEPENDENT SCHOOL**

REVISION A
Drawing No. 4812
Drawing No. 4812
Drawing No. 4812

REVISION B
Drawing No. 4812
Drawing No. 4812
Drawing No. 4812

PROJECT TITLE
St Albans secondary schools review

DRAWING FILE
Existing secondary schools and potential school sites

SCALE
NOT TO SCALE

DATE
MAY 2015

DESIGN
HNA

CHECKED
DATE

PROJECT NO.
4812

004 B

VINCENT AND GORRING
CHARTERED ARCHITECTS AND TOWN PLANNERS
STERLING COURT NORTON ROAD STEVENAGE HERTS
TELEPHONE: 01438 315331 FAX: 01438 722035

Appendix 12

Overall significance of landscape
effects

Key

Site boundary

Representative viewpoint

Point at which ZVI is generated, representing maximum height of built development above existing ground level (Sports hall parapet = 101.8m AOD.)

ZVI, generated with Google Earth Viewshed analysis tool, using Google Earth terrain data.

DRAFT

L17406 Harpenden Free School, Herts

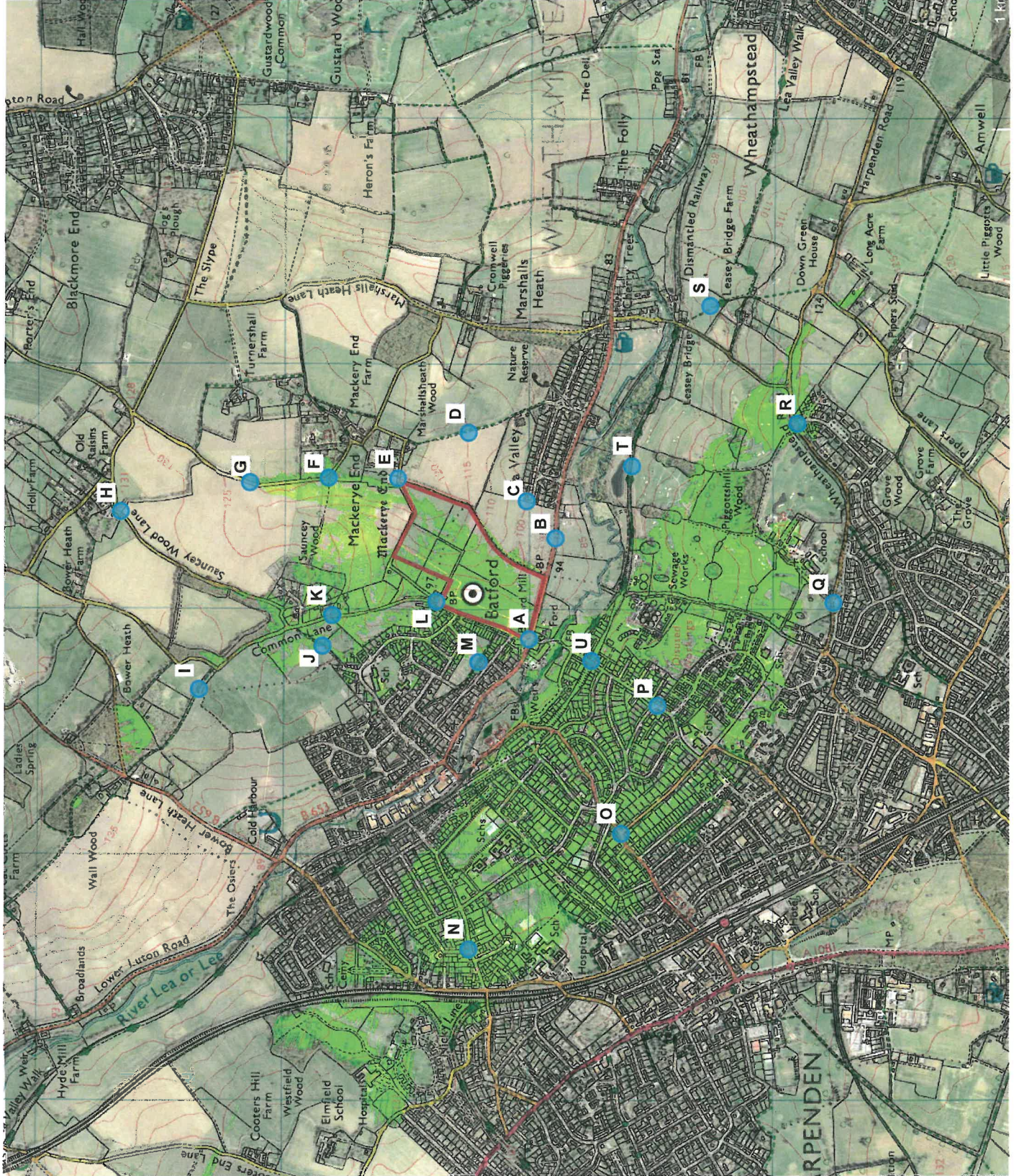
Zone of Visual Influence

Scale NTRS@ A3

July 2017



thelandscapepartnership



Landscape Effects

Table 11 shows the how significance of landscape effects are categorised

Table 14: Measuring significance of effect					
Magnitude of change	Sensitivity of receptors				
		High	Medium	Low	Negligible
	High	Major	Major/ Moderate	Moderate	Moderate/ Minor
	Medium	Major/ Moderate	Moderate	Moderate/ minor	Minor
	Low	Moderate	Moderate/ Minor	Minor	Negligible
	Negligible	Moderate/ Minor	Minor	Negligible	Negligible/ None

Table 15: summary of short and long term adverse landscape effects: overall significance		
Effect	Year 1	Year 10
Major	Landform; Viewpoint A	
Major-moderate	Landuse; Upper Lea Valley LCA (vicinity of the site); Viewpoints: E, L, M, Q, U	Landform; Viewpoint A
Moderate	Blackmore End LCA (vicinity of site)	Landuse; Upper Lea Valley LCA (vicinity of the site);
Minor-moderate	Viewpoints: K, O, P	Viewpoints: E, K, O, P
Minor	Vegetation Landscape Upper Lea Valley LCA (as a whole) Viewpoints: C, D, F, N, S	Vegetation Landscape Upper Lea Valley LCA (as a whole) Blackmore End LCA (vicinity of site) Viewpoints: C, D, F, N, S
Low		
Very Low	Viewpoint R	Viewpoint R
Negligible	Viewpoints: B, I Blackmore End LCA (as a whole)	Viewpoints: B, I Blackmore End LCA (as a whole)
No change	Viewpoints: G, J, T	Viewpoints: G, J, T
None	Viewpoint: H	Viewpoint: H

Table 16: Representative viewpoints			
Viewpoint	Visual sensitivity: value	Visual sensitivity: susceptibility to change	Overall visual sensitivity
A	Medium	High	High
B	Low	Medium	Low
C	Medium	High	High
D	Medium	High	High
E	Medium	High	High
F	Medium	High	High
G	Low	Medium	Low
H	Low	Medium	Low
I	Medium	High	Medium
J	Medium	High	High
K	Medium	High	High
L	Medium	High	High
M	Medium	High	High
N	Medium	High	High
O	Medium	High	High
P	Medium	High	High
Q	Medium	High	High
R	Medium	High	High
S	Medium	High	High
T	Medium	High	High
U	Medium	High	High

Table 17: Landscape effects: site features		
	Year one, winter	Year 10, summer
Landform		
Sensitivity: High		
Magnitude assessment:	High	Medium
Size/scale:		
Geographical influence:	High	High
Duration/ Reversibility	High	High
Overall magnitude of effect	High	Medium
Significance of effect	Major	Major-moderate
Nature of change:	Adverse	Adverse
Land use		
Sensitivity: Medium		
Magnitude assessment:	High	Medium
Size/scale:		
Geographical influence:	High	High
Duration/ Reversibility	High	High
Overall magnitude of effect	High	Medium
Significance of effect	Major-moderate	Moderate
Nature of change:	Adverse	Adverse
Vegetation		
Sensitivity: Medium		
Magnitude assessment:	Low	Low
Size/scale:		
Geographical influence:	Medium	Medium
Duration/ Reversibility	High	High

Overall magnitude of effect	Low	Low
Significance of effect	Minor	Minor
Nature of change:	Neutral	Beneficial
Landscape related historic assets Sensitivity: Medium		
Magnitude assessment: Size/scale:	Low	Low
Geographical influence:	Low	Low
Duration/ Reversibility	High	High
Overall magnitude of effect	Low	Low
Significance of effect	Minor	Minor
Nature of change:	Adverse	Adverse

Table 12: landscape effects: landscape character		
	Year one, winter	Year 10, summer
LCA33: Upper Lea Valley (As a whole) Sensitivity: Medium		
Magnitude assessment: Size/scale:	Low	Low
Geographical influence:	Low	Low
Duration/ Reversibility	High	High
Overall magnitude of effect	Low	Low
Significance of effect	Minor	Minor
Nature of change:	Adverse	Adverse
LCA 34: Blackmore End Plateau (As a whole) Sensitivity: Medium		
Magnitude assessment: Size/scale:	Low	Low
Geographical influence:	Very Low	Very Low
Duration/ Reversibility	High	High
Overall magnitude of effect	Very Low	Very Low
Significance of effect	Negligible	Negligible
Nature of change:	Adverse	Adverse
LCA33: Upper Lea Valley (vicinity of site) Sensitivity: Medium		
Magnitude assessment: Size/scale:	High	Medium
Geographical influence:	High	High
Duration/ Reversibility	High	High
Overall magnitude of effect	Medium	Medium
Significance of effect	Major-moderate	Moderate
Nature of change:	Adverse	Adverse
LCA 34: Blackmore End Plateau (vicinity of site) Sensitivity: Medium		
Magnitude assessment:	Medium	Low

Size/scale:		
Geographical influence:	Very Low	Very Low
Duration/ Reversibility	High	High
Overall magnitude of effect	Medium	Low
Significance of effect	Moderate	Minor
Nature of change:	Adverse	Adverse

Table 13: Visual effects: viewpoints		
	Year 1, winter	Year 10, summer
Viewpoint		
Viewpoint A: Looking north-east At: Junction of B653 Lower Luton Road and Common Lane c.85m AOD Sensitivity: High		
Magnitude assessment:	High	Medium
Size/scale:		
Geographical influence:	High	High
Duration/ Reversibility	High	High
Overall magnitude of effect	High	Medium
Significance of effect	Major	Major-moderate
Nature of change:	Adverse	Adverse
Viewpoint B: Looking west B653 Lower Luton Road to east of site c.100m to east of site c.94m AOD		
Magnitude assessment:	Low	Low
Size/scale:		
Geographical influence:	Low	Low
Duration/ Reversibility	High	High
Overall magnitude of effect	Low	Low
Significance of effect	Negligible	Negligible
Nature of change:	Adverse	Adverse
Viewpoint C Looking west Manor Road, at western edge of Lea Valley Estate c.250m to east of site c.98 AOD Sensitivity: High		
Magnitude assessment:	Very Low	Very Low
Size/scale:		
Geographical influence:	Very Low	Very Low
Duration/ Reversibility	High	High
Overall magnitude of effect	Low	Low
Significance of effect	Minor	Minor
Nature of change:	Adverse	Adverse

Viewpoint D Looking west Public Bridleway 54 between Mackerye End and Lea Valley Estate c.230m east of site c.115 AOD Sensitivity: High		
Magnitude assessment: Size/scale:	Very Low	Very Low
Geographical influence:	Very Low	Very Low
Duration/ Reversibility	High	High
Overall magnitude of effect	Very Low	Very Low
Significance of effect	Minor	Minor
Nature of change:	Adverse	Adverse
Viewpoint E Looking south-west Mackerye End Lane near to junction with public footpath no27a. Edge of Conservation Area North east corner of site c.125m AOD Sensitivity High		
Magnitude assessment: Size/scale:	Low	Low
Geographical influence:	Medium	Medium
Duration/ Reversibility	High	High
Overall magnitude of effect	Medium	Low
Significance of effect	Major-moderate	Minor-moderate
Nature of change:	Adverse	Adverse
Viewpoint F Looking south Point on Mackerye End (lane) Northern edge of Conservation Area c.320m to north of the site c.125m AOD Sensitivity: High		
Magnitude assessment: Size/scale:	Very Low	Very Low
Geographical influence:	Very Low	Very Low
Duration/ Reversibility	High	High
Overall magnitude of effect	Very Low	Very Low
Significance of effect	Minor	Minor
Nature of change:	Adverse	Adverse
Viewpoint G Looking south Point on Mackerye End (lane) c.600m to north of the site		

c.125m AOD Sensitivity: Low		
Magnitude assessment: Size/scale:	No change	No change
Geographical influence:		
Duration/ Reversibility		
Overall magnitude of effect	No change	No change
Significance of effect	None	None
Nature of change:	None	None
Viewpoint H Looking south Sauncey Wood Lane c.1.1km to the north of the site c.131m AOD Sensitivity: Low		
Magnitude assessment: Size/scale:	No change	No change
Geographical influence:		
Duration/ Reversibility		
Overall magnitude of effect	No change	No change
Significance of effect	None	None
Nature of change:	None	None
Viewpoint I Looking south-east Public Footpath no. 60 leading westwards from Common Lane c.1.0km to the north-west of the site. c.130m AOD Sensitivity: Medium		
Magnitude assessment: Size/scale:	Very Low	Very Low
Geographical influence:	Very Low	Very Low
Duration/ Reversibility	High	High
Overall magnitude of effect	Very Low	Very Low
Significance of effect	Negligible	Negligible
Nature of change:	Adverse	Adverse
Viewpoint J Looking south-east Public Footpath no.61 from Harpenden to Sauncey Wood c.530m to the north-west of the site. c.115m AOD Sensitivity: High		
Magnitude assessment: Size/scale:	No change	No change
Geographical influence:		
Duration/ Reversibility		
Overall magnitude of	No change	No change

effect		
Significance of effect		
Nature of change:		
Viewpoint K Looking south Common Lane c. 470m to the north of the site. c.115m AOD Sensitivity: High		
Magnitude assessment: Size/scale:	Medium	Medium
Geographical influence:	Low	Low
Duration/ Reversibility	High	High
Overall magnitude of effect	Low	Low
Significance of effect	Minor-moderate	Minor-moderate
Nature of change:	Adverse	Adverse
Viewpoint L Looking east Common Lane c.80m from site boundary c.97m AOD Sensitivity: High		
Magnitude assessment: Size/scale:	Medium	Medium
Geographical influence:	Medium	Medium
Duration/ Reversibility	High	High
Overall magnitude of effect	Medium	Medium
Significance of effect	Major-moderate	Major-moderate
Nature of change:	Adverse	Adverse
Viewpoint M Looking east Public Footpath no.27 c.250m to the west of the site. c.95m AOD Sensitivity: High		
Magnitude assessment: Size/scale:	Medium	Medium
Geographical influence:	Medium	Medium
Duration/ Reversibility	High	High
Overall magnitude of effect	Medium	Medium
Significance of effect	Major-moderate	Major-moderate
Nature of change:	Adverse	Adverse
Viewpoint N Looking east Ox Lane c.1.2km to the west of the site. c.120m AOD Sensitivity: High		
Magnitude assessment:	Medium	Medium

Size/scale:		
Geographical influence:	Low	Low
Duration/ Reversibility	High	High
Overall magnitude of effect	Low	Low
Significance of effect	Minor	Minor
Nature of change:	Adverse	Adverse
Viewpoint O Looking north-east B652 Station Road c.880m to the south-west of the site. c.120m AOD Sensitivity: High		
Magnitude assessment:	Low	Low
Size/scale:		
Geographical influence:	Low	Low
Duration/ Reversibility	High	High
Overall magnitude of effect	Low	Low
Significance of effect	Minor-moderate	Minor-moderate
Nature of change:	Adverse	Adverse
Viewpoint P Looking north-east Crabtree Lane c.650m to the south-west of the site. c.115m AOD Sensitivity: High		
Magnitude assessment:	Medium	Medium
Size/scale:		
Geographical influence:	Low	Low
Duration/ Reversibility	High	High
Overall magnitude of effect	Low	Low
Significance of effect	Minor-moderate	Minor-moderate
Nature of change:	Adverse	Adverse
Viewpoint Q		
Magnitude assessment:	Medium	Medium
Size/scale:		
Geographical influence:	Medium	Medium
Duration/ Reversibility	High	High
Overall magnitude of effect	Medium	Medium
Significance of effect	Major-moderate	Major-moderate
Nature of change:	Adverse	Adverse
Viewpoint R Looking north-west. Long Buffers (road) c.1.2km to the south-east of the site. c.125m AOD Sensitivity: High		
Magnitude assessment:	Very Low	Very Low
Size/scale:		

Geographical influence:	Very Low	Very Low
Duration/ Reversibility	High	High
Overall magnitude of effect	Very Low	Very Low
Significance of effect	Very Low	Very Low
Nature of change:	Adverse	Adverse
Viewpoint S Looking north-west. Public footpath no.28 from Leasey Bridge Road to Harpenden Road c.1.3km to the south-east of the site. c.97m AOD Sensitivity: High		
Magnitude assessment: Size/scale:	Very Low	Very Low
Geographical influence:	Very Low	Very Low
Duration/ Reversibility	High	High
Overall magnitude of effect	Very Low	Very Low
Significance of effect	Minor	Minor
Nature of change:	Adverse	Adverse
Viewpoint T Looking north-west. Public Bridleway no.97 from Leasey Bridge to Harpenden Part of Lea Valley Walk Part of National Cycle Route 57 c.600m to the south-east of the site. c.85m AOD Sensitivity: High		
Magnitude assessment: Size/scale:	No change	No change
Geographical influence:		
Duration/ Reversibility		
Overall magnitude of effect	No change	No change
Significance of effect	No change	No change
Nature of change:		
Viewpoint U Looking north. Taken from Crabtree Lane at point where national cycle route 57 crosses the road c.280m to the south of the site. c.94m AOD Sensitivity: High		
Magnitude assessment: Size/scale:	Medium	Medium
Geographical influence:	Medium	Medium

Duration/ Reversibility	High	High
Overall magnitude of effect	Medium	Medium
Significance of effect	Major-moderate	Major-moderate
Nature of change:	Adverse	Adverse